

Type BFS-10-N-AIR / BFS-10-O-AIR

for monitoring volume flow of gaseous media, with or without optical display

Features

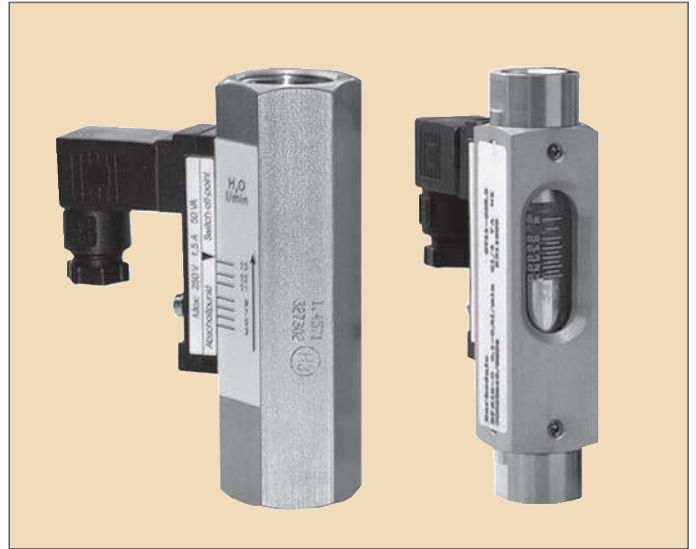
set point continuously adjustable
rugged, low hysteresis, any mounting position,
high accuracy and functional safety

Measuring ranges

0,2...1,3 NI/min to 200...650 NI/min for air

Applications

Measuring and monitoring of gaseous media,
e. g. in cooling systems, test beds, pumps etc.



Technical data BFS-10-N-AIR (without indication)

Measuring principle : variable aera flow meter			
Materials	brass version	stainless steel ver.	
Var. aera flow meter:	brass	1.4571	
Spring	: 1.4571	1.4571	
Fitting	: brass, nickel-plated	1.4571	
Housing	: brass, nickel-plated	1.4571	
Magnets	: ferrite	ferrite	
Operating pressure	brass	VA	Pressure drop
BFS-10-N G1/4	: PN 300 bar	350 bar	0,02...0,2 bar
BFS-10-N G1/2	: PN 300 bar	350 bar	0,02...0,3 bar
BFS-10-N G1	: PN 250 bar	300 bar	0,02...0,4 bar
Operating temperat. : 100 °C (standard), 160 °C (option HT)			

Switching ranges (air in NI/min) for:

BFS-10-N-AIR G1/4:	BFS-10-N-AIR G1/2:	BFS-10-N-AIR G1:
0,6...2,2	2,5...10	60...180
1,7...6,0	5,5...20	100...300
2,5...8,0	8,0...30	200...650
3,0...12	10...35	
3,0...22	24...90	
7,0...24	55...220	
12...34	65...240	
16...56	80...300	
20...80	140...525	

Accuracy	: ±10% f. s.	
Electrical connect.	: plug acc. to DIN 43650	
Contact rating		
BFS-10-N-AIR G1/4	: 200 V / 1 A / 20 VA	(NO)
	: 200 V / 1 A / 20 VA	(SPDT)
BFS-10-N-AIR G1/2	: 230 V / 3 A / 60 VA	(NO)
	: 250 V / 1,5 A / 50 VA	(SPDT)
BFS-10-N-AIR G1	: 250 V / 3 A / 100 VA	(NO)
	: 250 V / 1,5 A / 50 VA	(SPDT)
EEx-m II T6 vers.	: 250 V / 2 A / 60 VA	(NO) G1/2, G1 only
	: 250 V / 1 A / 30 VA	(SPDT) G1/2, G1
ExII 1GD		
EEx ia II B T6 vers.	: 45 V / 1 A / (NO / SPDT) G1/2, G1 only	
Protection class	: IP65 (plug acc. to DIN 43650) IP67 (with moulded cable, EEx-models only)	

Technical data BFS-10-O-AIR (with optical indication)

Measuring principle : variable aera flow meter			
Materials	brass version	stainless steel ver.	
Var. aera flow meter:	brass	1.4571	
Spring	: 1.4571	1.4571	
Fitting	: brass, nickel-plated	1.4571	
Display housing	: alumin., anodized	alumin., anodized	
Glass	: Duran 50	Duran 50	
Magnets	: ferrite	ferrite	
Operating pressure	brass	VA	Pressure drop
BFS-10-O G1/4	: PN 16 bar	16 bar	0,02...0,2 bar
BFS-10-O G1/2	: PN 16 bar	16 bar	0,02...0,3 bar
BFS-10-O G1	: PN 10 bar	10 bar	0,02...0,4 bar
Operating temperat. : 100 °C (standard), 160 °C (option HT)			

Switching ranges (air in NI/min) for:

BFS-10-O-AIR G1/4:	BFS-10-O-AIR G1/2:	BFS-10-O-AIR G1:
0,2...1,3	3,0...12	22,5...80
0,5...2,0	7,0...30	50...130
0,8...3,0	12...40	130...420
1,5...5,0	28...125	200...625
2,0...8,0	50...200	
3,0...12	100...420	
3,5...14	120...480	
5,5...20		
7,0...24		
10...35		
10...42		

Accuracy	: ±10% f. s.	
Electrical connect.	: plug acc. to DIN 43650	
Contact rating		
BFS-10-O-AIR G1/4	: 200 V / 1 A / 20 VA	(NO)
	: 200 V / 1 A / 20 VA	(SPDT)
BFS-10-O-AIR G1/2	: 230 V / 3 A / 60 VA	(NO)
	: 250 V / 1,5 A / 50 VA	(SPDT)
BFS-10-O-AIR G1	: 250 V / 3 A / 100 VA	(NO)
	: 250 V / 1,5 A / 50 VA	(SPDT)
EEx-m II T6 vers.	: 250 V / 2 A / 60 VA	(NO) G1 only
	: 250 V / 1 A / 30 VA	(SPDT) G1 only
ExII 1GD		
EEx ia II B T6 vers.	: 45 V / 1 A / (NO / SPDT) G1 only	
Protection class	: IP65 (plug acc. to DIN 43650) IP67 (with moulded cable, EEx-models only)	

Type BFS-10-N-AIR / BFS-10-O-AIR

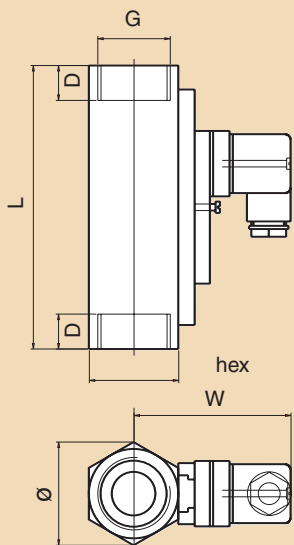
02 / 05 FLS US 01/1

Barksdale Flow Switches Overview

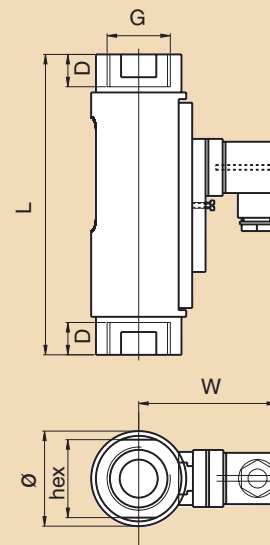
Specifications are subject to changes without notice.

Dimensions (in mm)

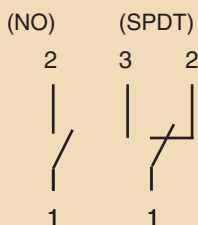
BFS-10-N-AIR



BFS-10-O-AIR



Wiring diagram



	G 1/4	G 1/2	G 1
(G)			
(hex)	17	27	41
(Ø)	17	31	47
(W)	47	52	76
(D)	10	14	17
(L)	65	90	130
Weight (g)	140	350	1050

	G 1/4	G 1/2	G 1
(G)			
(hex)	17	27	41
(Ø)	20	32	50
(W)	49	53	77
(D)	10	14	18
(L)	90	114	158
Weight (g)	140	300	900

Order numbers

BFS-10-O-AIR	Brass	BFS-10-O-AIR	Brass
0710-001	BFS-10-O-G1/4-MS-NO-ST	0710-013	BFS-10-O-G1/4-MS-WE-ST
0710-002	BFS-10-O-G1/2-MS-NO-ST	0710-014	BFS-10-O-G1/2-MS-WE-ST
0710-003	BFS-10-O-G1-MS-NO-ST	0710-015	BFS-10-O-G1-MS-WE-ST
Stainless steel		Stainless steel	
0710-004	BFS-10-O-G1/4-SS-NO-ST	0710-016	BFS-10-O-G1/4-SS-WE-ST
0710-005	BFS-10-O-G1/2-SS-NO-ST	0710-017	BFS-10-O-G1/2-SS-WE-ST
0710-006	BFS-10-O-G1-SS-NO-ST	0710-018	BFS-10-O-G1-SS-WE-ST
BFS-10-N-AIR	Brass	BFS-10-N-AIR	Brass
0710-007	BFS-10-N-G1/4-MS-NO-ST	0710-019	BFS-10-N-G1/4-MS-WE-ST
0710-008	BFS-10-N-G1/2-MS-NO-ST	0710-020	BFS-10-N-G1/2-MS-WE-ST
0710-009	BFS-10-N-G1-MS-NO-ST	0710-021	BFS-10-N-G1-MS-WE-ST
Stainless steel		Stainless steel	
0710-010	BFS-10-N-G1/4-SS-NO-ST	0710-022	BFS-10-N-G1/4-SS-WE-ST
0710-011	BFS-10-N-G1/2-SS-NO-ST	0710-023	BFS-10-N-G1/2-SS-WE-ST
0710-012	BFS-10-N-G1-SS-NO-ST	0710-024	BFS-10-N-G1-SS-WE-ST

Order number example: Order number + switching range = 0712-020, 7,0...30,0 NI/min

Description

NO = normally open WE = change-over	O = with indication N = without indication	MS = brass SS = stainless steel	Please specify switching range (see table on page P3) additional to order number.
--	---	------------------------------------	---